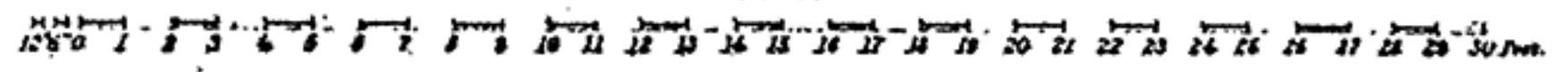


Approved by Light House Board
 May 23rd 1877

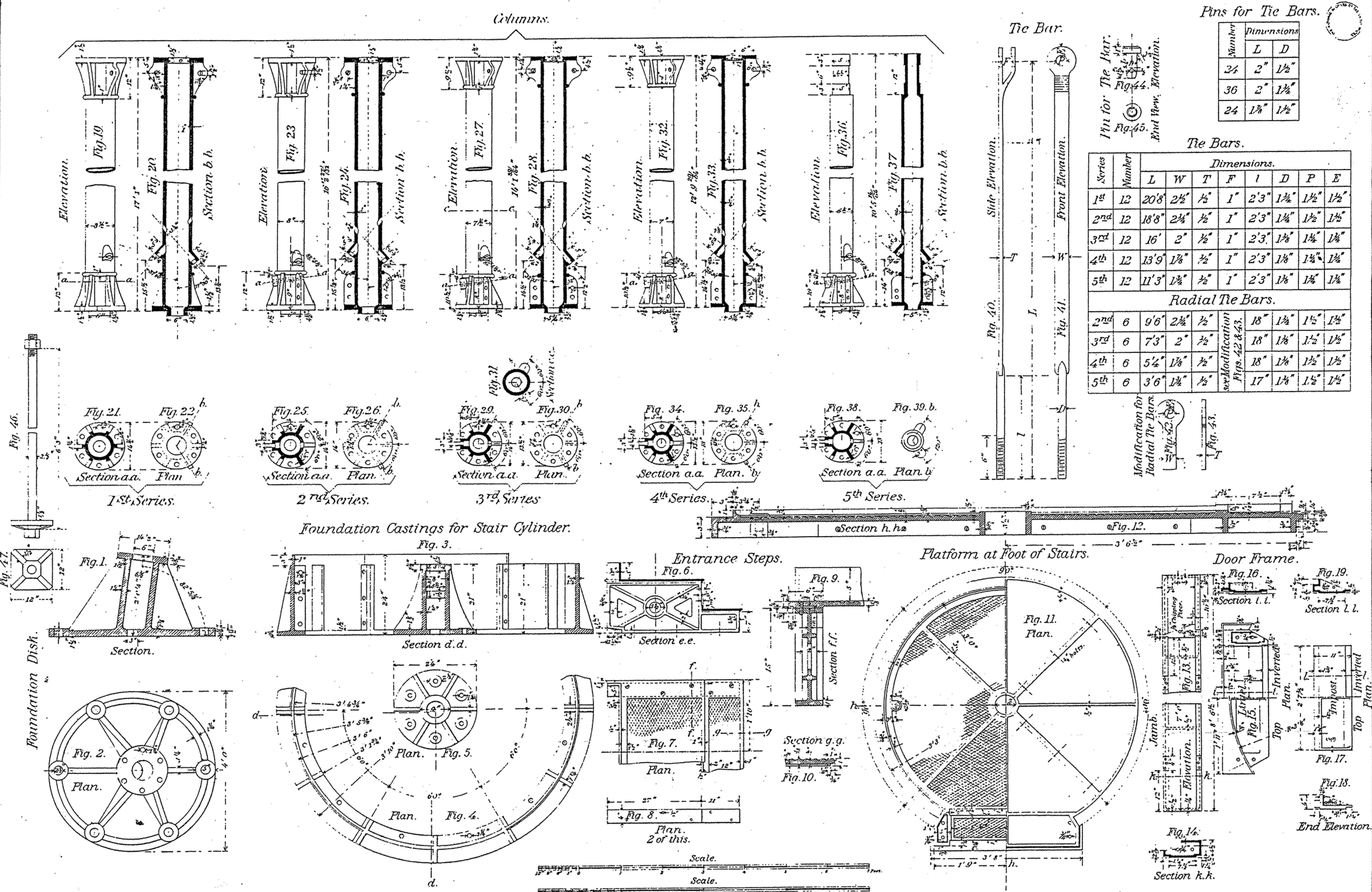
W. C. Adams
 Engineer Secretary.

Note. The Foundation will be formed to suit the character of the Soil.

Scale.



*6th District
 1265*



Pins for Tie Bars.

Number	Dimensions	
	L	D
24	2"	1 1/2"
36	2"	1 1/2"
24	1 1/2"	1 1/2"

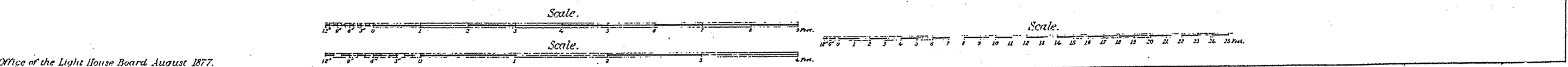
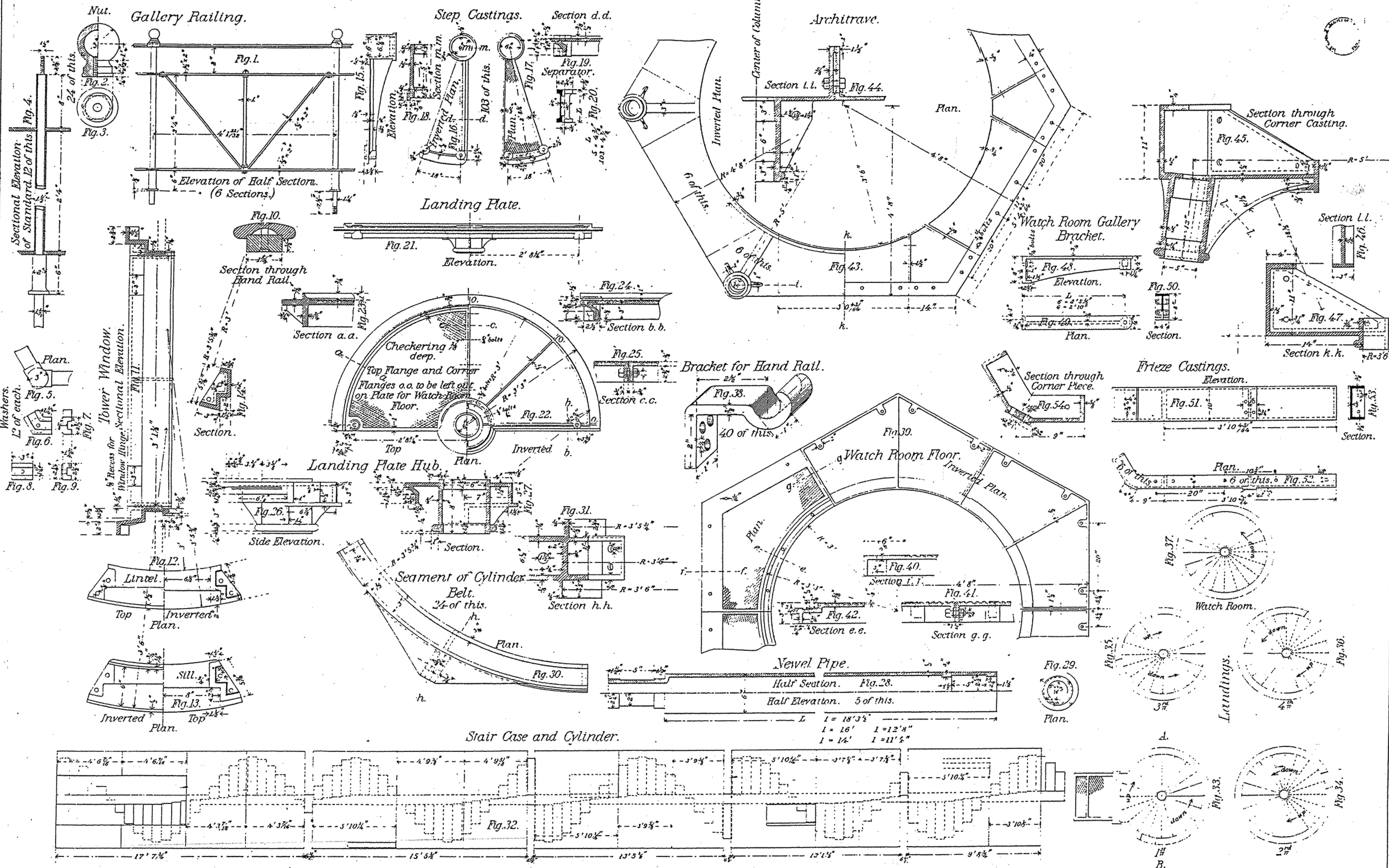
Tie Bars.

Series	Number	Dimensions.							
		L	W	T	F	I	D	P	E
1 st	12	20'8"	2 1/2"	1/2"	1"	2'3"	1 1/2"	1 1/2"	1 1/2"
2 nd	12	18'8"	2 1/4"	1/2"	1"	2'3"	1 1/4"	1 1/2"	1 1/2"
3 rd	12	16'	2"	1/2"	1"	2'3"	1 3/8"	1 1/4"	1 1/4"
4 th	12	13'9"	1 1/8"	1/2"	1"	2'3"	1 3/8"	1 1/4"	1 1/4"
5 th	12	11'3"	1 1/2"	1/2"	1"	2'3"	1 3/8"	1 1/4"	1 1/4"

Radial Tie Bars.

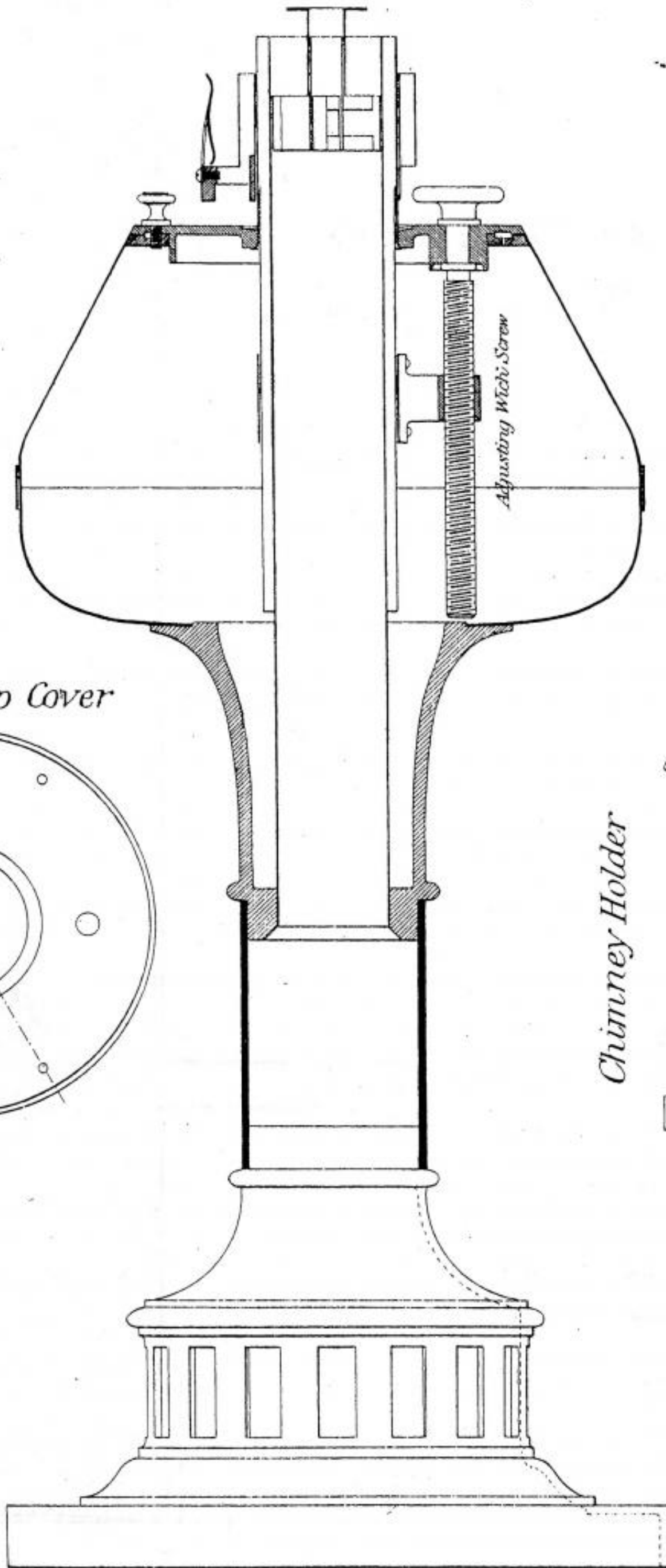
Series	Number	L	W	T	F	Dimensions.		
						I	D	P
2 nd	6	9'6"	2 1/2"	1/2"	18"	1 1/2"	1 1/2"	1 1/2"
3 rd	6	7'3"	2"	1/2"	18"	1 1/8"	1 1/2"	1 1/2"
4 th	6	5'4"	1 1/8"	1/2"	18"	1 1/8"	1 1/2"	1 1/2"
5 th	6	3'6"	1 1/2"	1/2"	17"	1 1/8"	1 1/2"	1 1/2"

Modification for Radial Tie Bars.

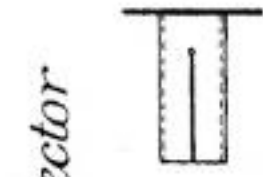


HAINS MINERAL OIL LAMP
 FOR 4TH, 5TH AND 6TH ORDER LENSES.

Sectional Elevation of Lamp



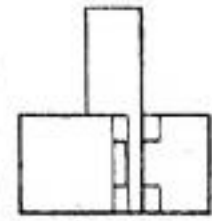
Elevation



Deflector

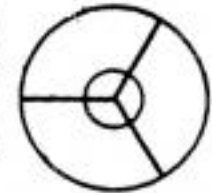


Plan

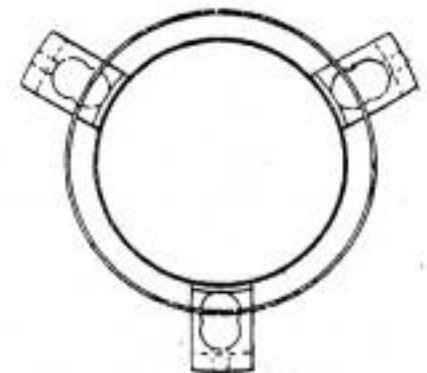


Deflector Stem

Sect. Elevation

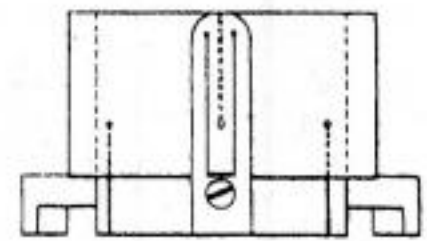


Plan



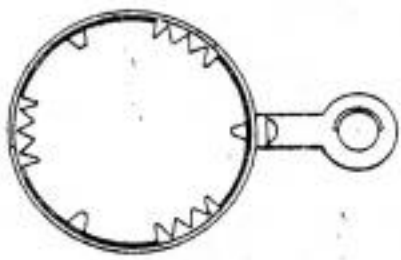
Plan

Chimney Holder

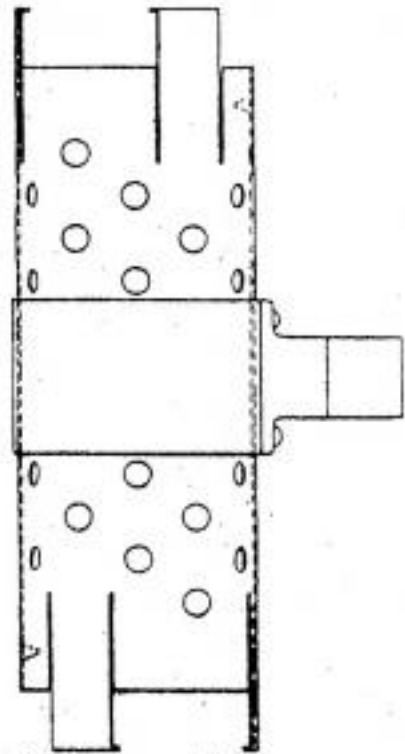


Elevation

Plan

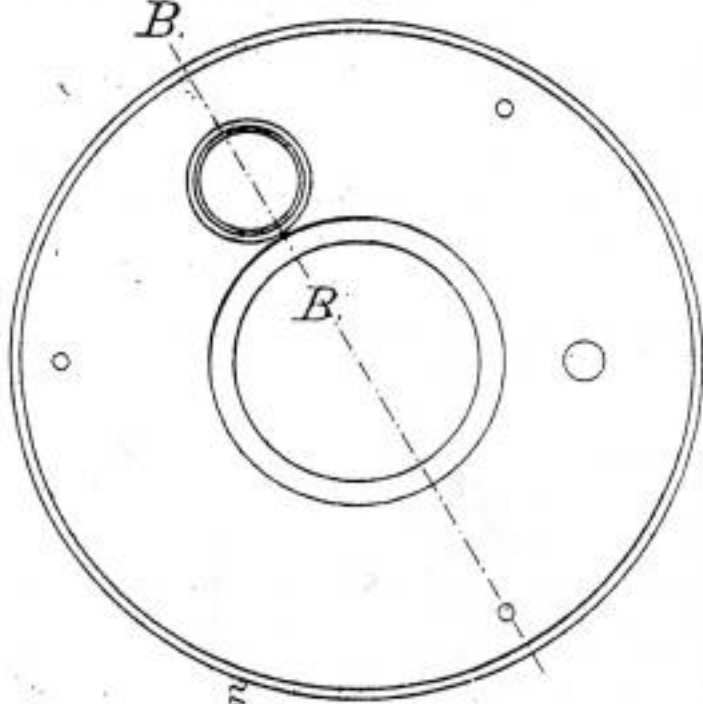


Wick Mover



Elevation

Plan of Lamp Cover



B.

B.

Cover

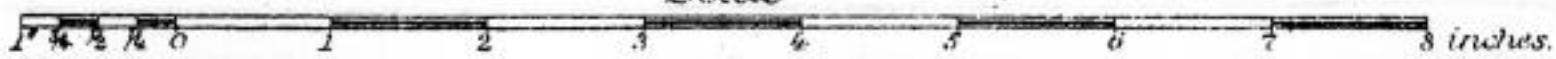


Half Elevation

Half Sect. Elevation

Sectional Elevation B.B.

Scale



Lantern.

